

## Contact

**Centre for Continuing Education  
Indian Institute of Science,  
Bengaluru 560 012, India  
Phone: +91 080 2293  
2055/2491/2247  
E-mail: [office.cce@iisc.ac.in](mailto:office.cce@iisc.ac.in)**

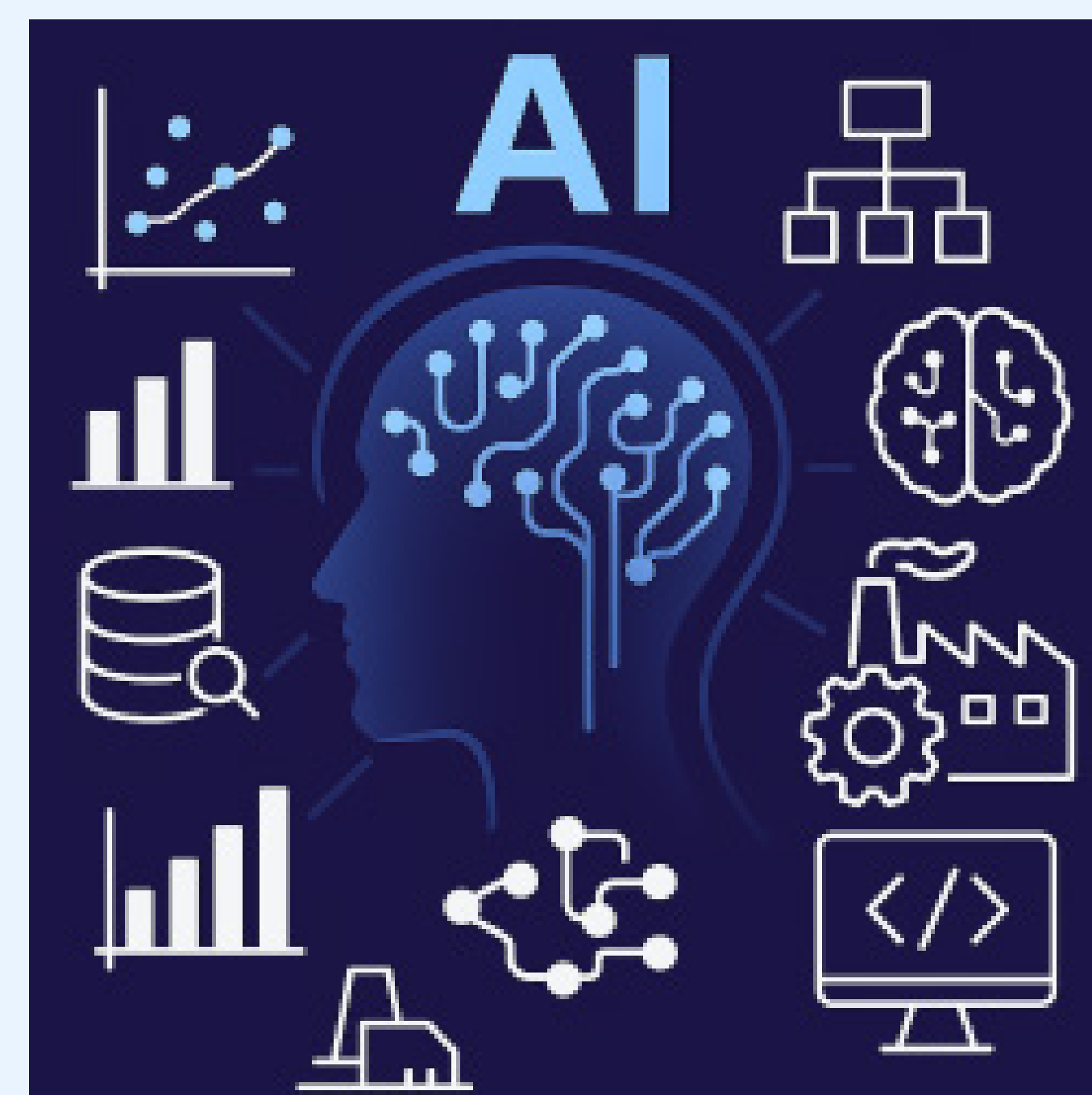


## Minimum Qualification requirements

Bachelor of Engineering or Science.

## Pre-requisites

Inclination to learn mathematical aspects of ML and AI; Python programming



## Who should attend

Corporate employees willing to up-skill or re-skill  
Fresh graduates, Government employees working on big data analysis.

## Schedule

Every Saturday between 10 AM to 2 PM for 8 successive working weeks



## Objectives

This course is aimed at participants interested in learning to use tools from data analysis, machine learning, and artificial intelligence for solving real world problems in science and engineering. The emphasis is on identifying and modelling problems, collecting and curating data, building models and interpreting the results, in various domains.

## Syllabus

Introduction to data driven problem solving; Data types, collection and curation; Introduction and relevance of Data Analysis (DA), exploratory DA, visualization. Foundational statistics; Introduction to machine learning; types and models of learning. Neural networks and deep learning; Modern AI systems; Real-world case studies.

# From Data to Decisions: Machine Learning & AI for Real World Science & Engineering

